



**CORPORATE PRESENTATION
FEBRUARY 2023**

WWW.GALILEORESOURCES.COM

DISCLAIMER



THIS DOCUMENT ("DOCUMENT") IS STRICTLY CONFIDENTIAL AND IS BEING PROVIDED TO YOU SOLELY FOR YOUR INFORMATION. THE DISTRIBUTION OF THIS DOCUMENT MAY BE RESTRICTED BY LAW. ACCORDINGLY, THIS DOCUMENT MAY NOT BE DISTRIBUTED IN ANY JURISDICTION EXCEPT IN ACCORDANCE WITH THE LEGAL REQUIREMENTS APPLICABLE TO SUCH JURISDICTION. IN PARTICULAR, YOU MAY NOT DISTRIBUTE, FORWARD, REPRODUCE, TRANSMIT OR OTHERWISE MAKE AVAILABLE THIS DOCUMENT OR DISCLOSE ANY INFORMATION CONTAINED IN IT OR CONVEYED DURING ANY ACCOMPANYING ORAL PRESENTATION (THE "INFORMATION"), IN WHOLE OR IN PART, DIRECTLY OR INDIRECTLY, IN THE UNITED STATES, AUSTRALIA, CANADA OR JAPAN, OR IN ANY OTHER JURISDICTION WHERE TO DO SO WOULD BE UNLAWFUL. FAILURE TO COMPLY WITH THESE RESTRICTIONS MAY CONSTITUTE A VIOLATION OF APPLICABLE SECURITIES LAWS. PERSONS INTO WHOSE POSSESSION THIS DOCUMENT COMES ARE REQUIRED BY THE COMPANY TO INFORM THEMSELVES ABOUT AND TO OBSERVE ANY SUCH RESTRICTIONS. NEITHER GALILEO RESOURCES PLC ("THE COMPANY") NOR ITS DIRECTORS, OFFICERS, EMPLOYEES, RESPECTIVE AFFILIATES, AGENTS OR ADVISERS ACCEPT ANY LIABILITY TO ANY PERSON IN RELATION TO THE DISTRIBUTION OR POSSESSION OF THIS DOCUMENT IN OR FROM ANY JURISDICTION.

The Document and the Information have been prepared by or on behalf of, and is the sole responsibility of, the Company. The Information is being provided to you during an oral presentation and is not a complete record of that discussion. The Information does not purport to be full or complete and does not constitute investment advice. No representation or warranty, express or implied, is given by or on behalf of the Company, its affiliates, agents or advisers or any other person as to, and no reliance may be placed for any purposes whatsoever on, the adequacy, accuracy, completeness, fairness or reasonableness of the Information. None of the Information has been independently verified by the Company, its affiliates, agents or advisers or any other person, and no liability or responsibility whatsoever is accepted by any of them for any loss howsoever arising, directly or indirectly, from any use of the Information or otherwise arising in connection therewith. The Company, its affiliates, agents and advisers do not undertake and are not under any duty to update this Document or to correct any inaccuracies in the Information which may become apparent, or to provide you with any additional information.

The sole purpose of this Document is to provide background information to assist you in obtaining a general understanding of the business of the Company. This Document does not constitute an offer to sell, or a solicitation of an offer to buy or subscribe for, securities of the Company in any jurisdiction. It is not intended to provide the basis of any investment decision, financing or any other evaluation and is not to be considered as a recommendation by the Company, its affiliates, agents or advisers that any recipient of this Document purchase or subscribe for any securities in the Company. Each recipient of this Document contemplating any investment in the Company is required to make and will be deemed to have made its own independent investigation and appraisal of the business, results of operations, financial condition, liquidity, performance and prospects of the Company and the merits and risks of an investment in the securities of the Company. The delivery of this Document at any time does not imply that the information in it is correct as of any time after its date, or that there has been no change in the business, results of operations, financial condition, liquidity, performance and prospects of the Company since that date and no obligations is accepted to update any such information after the date of the Document. No person affiliated with the Company, their directors, officers, employees, respective affiliates, agents or advisers has been authorised to give any information or to make any representation not contained in this Document and, if given or made, such information or representation must not be relied upon.

The securities of the Company have not been, and will not be, registered under the US Securities Act of 1933, as amended (the "Securities Act") and may not be offered, sold, transferred or delivered, directly or indirectly, within the United States except pursuant to an exemption from, or in a transaction not subject to, the registration requirements of the Securities Act.

In the United Kingdom, this document is directed solely at persons having professional experience in matters relating to investments and who are investment professionals as specified in Article 19(5) of the Financial Services and Markets Act 2000 (Financial Promotion) Order 2005 (the "Financial Promotions Order"), to persons who are high net worth companies, unincorporated associations or high value trusts as specified in Article 49(2) of the Financial Promotion Order (all such persons together being referred to as "relevant persons"). In addition to the foregoing restrictions, this document is made and directed only at persons falling within the meaning of "qualified investors" as defined in section 86 of the Financial Services and Markets Act 2000 (as amended).

This Document may contain forward-looking statements, including, but not limited to, statements as to the Company's business, results of operations, financial condition, liquidity, performance and prospects and trends and developments in the markets in which the Company operates. Forward-looking statements include all statements other than statements of historical fact and in some cases may be identified by terms such as "targets", "believes", "expects", "anticipates", "estimates", "aims", "intends", "will", "may", "would", "could" or, in each case, their negative or comparable terms. By their nature, forward-looking statements involve risk and uncertainty because they relate to future events and circumstances that may or may not occur. A number of factors, which may be beyond the control of the Company, its affiliates, agents and advisers, could cause actual results and developments to differ materially from those expressed or implied by the forward-looking statements. Forward-looking statements in this Document reflect the Company's view with respect to future events as at the date hereof and are subject to known and unknown risks, uncertainties and assumptions relating to the Company's operations, results of operations, financial condition, growth, strategy, liquidity and the markets in which the Company operates. No assurances can be given that the forward-looking statements in this Document will be realised. Forward-looking statements are not guarantees of future performance. The Company, its affiliates, agents and advisers undertake no obligation and do not intend to update any forward-looking statements in this presentation to reflect events or circumstances after the date of this presentation.

BOARD OF DIRECTORS



Colin Bird
Chief Executive Officer & Chairman

Colin Bird is a chartered mining engineer with multi commodity mine management experience in Africa, Spain, Latin America and in the Middle East. He has been the prime mover in a number of public listings in the UK, Canada and South African and is currently Chief Executive Officer of Tiger Resource Finance PLC, AIM quoted Galileo Resources PLC and formerly Non-Executive Chairman of Jubilee Metals Group PLC. He has been responsible for founding a number of PLCs' which have achieved mid- cap status and was the founder of Kiwara PLC which discovered the large copper project Kalumbila currently being developed by First Quantum Minerals Ltd. a US\$ 11 billion quoted company. Colin was appointed Executive Chairman during August 2016.

Joel Silberstein
Finance Director

Joel joined the Company as Chief Financial Officer in June 2013. Prior to this Joel held the position of Group Controller and Vice President Finance of Toronto Stock Exchange quoted European Goldfields Limited, where he supported the executive team in growing a mining concern from exploration through development phases until the Company was taken over by Eldorado Gold Corporation. He also joint the Galileo Resources Plc team as Financial director October 2020. He qualified as a chartered accountant with Mazars, Cape Town in 2002.

Edward Slowey
Technical Director

Ed holds a BSc degree in Geology from the National University of Ireland and is a founder member of The Institute of Geology of Ireland. He has more than 40 years' experience in mineral exploration, mining and project management. He worked as a mine geologist at Europe's largest zinc mine in Navan, Ireland and was exploration manager for Rio Tinto in Ireland for more than a decade, which led to the discovery of the Cavanacaw gold deposit. He has also operated as an exploration geologist and consultant in many parts of the world, including Africa, Europe, America and the FSU. This work included joint venture negotiation, exploration programme planning and management through to feasibility study implementation for a variety of commodities. As a professional consultant, work has included completion of CPR's and 43-101 technical reports for international stock exchange listings and fundraising, while also undertaking assignments for the World Bank and European Union bodies. In addition, Ed served as director of several private and public companies, including the role of CEO and Technical Director at AIM-listed Orogen Gold Plc which discovered the Mutsk gold deposit in Armenia.

Christopher Molefe
Non-Executive Director

Mr. Molefe was formerly the Chief Executive of Royal Bafokeng Resources (Pty) Limited and the Non-Executive Chairman of Merafe Resources Limited a publicly listed company on the JSE Securities Exchange, and is currently a non-executive Director of Capital Oil (Pty) Ltd and Jubilee Metals Group Plc. Mr. Molefe has held several positions in corporate banking and industry for the previous 20 years. He commenced his career as Group Human Resource Manger at Union Carbide Africa Corporation. His subsequent positions include being the Manager of Corporate Affairs at Mobil Oil Southern Africa (Pty) Limited; an Executive Director at Black Management Forum; a Financial Analyst at Chase Manhattan Bank; the Marketing Manager at African Bank Limited; an Executive Manager at Transnet (Propnet) (Pty) Limited; and an Executive Director at Dipapatto Media (Pty) Limited.

Richard Wollenberg
Non-Executive Director

Richard Wollenberg, was, between 1981 and 1996, an investment consultant with Brown Shipley Stockbroking Limited and has over the past 25 years, been actively involved in a number of corporate acquisitions, mergers and capital re-organisations of public and private companies. Mr. Wollenberg is currently Chairman and Chief Executive Officer of The Cardiff Property Public Limited Company, a quoted property investment and development company. He was also a Non-Executive Director of Kiwara Plc alongside Colin Bird.

CORPORATE



Number of ordinary shares in issue: 1,160,688,453

AIM code: GLR

Market Cap: GBP 12.53 million

Significant Shareholders

Name of Holder	No. of Ordinary Shares	% of Voting Rights
Hargreaves Lansdown Asset Mgmt	155,845,645	14.03
Interactive Investor	120,505,382	10.85
Jarvis Investment Management	114,567,550	10.32
Mr Colin Bird	78,605,862	7.08
Raymond James Investment Services	56,336,812	5.07
Barclays Wealth	54,887,101	4.94
Sandfire Resources NL	41,100,124	3.70
Halifax Share Dealing	35,019,045	3.15

MISSION STATEMENT



- Bring Luansobe open pit into production before end of first half of 2023
Commence Luansobe large scale exploration programme before the end of second half 2023
- Complete Kamativi lithium tantalum and tin exploration programme and assess future plans
Advance copper occurrence at Kamativi
- Carry out drilling on Kalahari copper silver licenses in Botswana which show the most potential
- BC Ventures Zimbabwe commence drilling and establish initial gold resource in Zimbabwe Bulawayo licenses
Confirm the presence of nickel on the Bulawayo licenses and if so commence aggressive drilling programme
- Shinganda license concentrate drilling on most promising trend with a view to establishing a significant copper gold resource
or alternatively a sustainable open pit operation
- Complete the Glenover transaction for phase 2 payment
- Continue M&A activity in Southern Africa
- Commence initial operational work at Kashitu zinc on water management and environmental permit work
- Small drilling programme to assess Ferber potential

GALILEO COPPER PROJECTS



GALILEO PROJECTS OVERVIEW



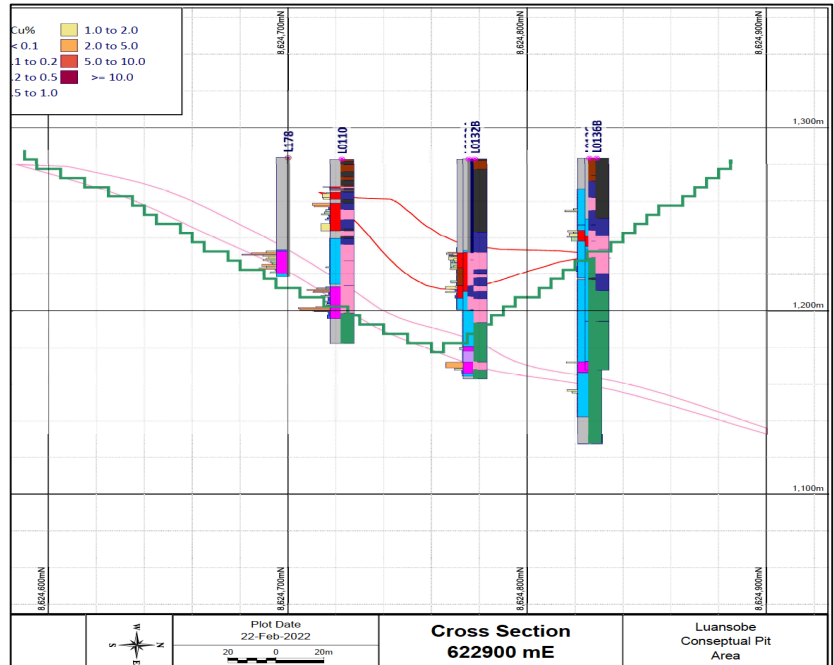
Project	Commodity	Status
Luansobe (Zambia)	● Cu	Resource estimation & mine design Targeting >12Mt @ 2% Cu
Shinganda (Zambia)	● Cu	Drilling & exploration Targeting IOCG >15Mt
Sandfire (Botswana)	● Cu	Exploration Funded by Option partner
GLR Botswana Cu	● Cu	
Kamativi (Zimbabwe)	● Li	Exploration Expansion to include Sn & Ta
Bulawayo Gold (Zimbabwe)	● Au - Ni	Exploration Multiple targets drill-ready
Ferber (USA)	Au	Drill ready
Kashitu (Zambia)	● Zn	Small-scale production Start-up planning for early cash flow

LUANSOBE, ZAMBIA (Cu)



LUANSOBE, ZAMBIA (Cu)

- Located 15k NW of Mufulira
- Exploration licence covers 918ha
- New JV Co gives GLR the right to earn 75% majority interest
- Reliable local partner Statunga Investments, working with GLR on other projects in Zambia
- 1999 underground Mineral Resource Estimate (Z.C.C.M Ltd – Phiri) from 100m to 1,250m, M&I 65Mt @ 2.37% Cu
- GLR targeting 4 – 5Mt open pit resource @ >1% Cu
- Relogging of core by GLR revealed large mineralised intercepts never previously sampled suitable for open pit development
- Addison Mining drill programme completed October 2022 (30 holes – 3,800m) – Resource estimation and open pit modelling about to be finalized
- Provisional documentation to process ore and possibly JV agreed in principle with local listed producer

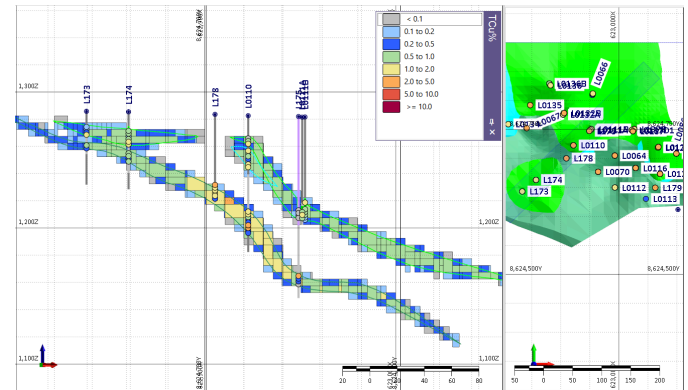


LUANSOBE, ZAMBIA (Cu)

- Preliminary open pit Mineral Resource Estimate of 5Mt @ 0.9% Cu
- Assays received for the first 15 holes. Peak intercepts include:
 - LUDD005: 2.78% Cu over 2.56m from 45.44m
 - LUDD006: 0.66% cu over 7m from 21m
 - LUDD009: 0.95% cu over 16.39m from 54m
 - LUDD012: 0.9% Over 10.25m from 94m
 - LUDD013: 2.63% Cu over 23.73m from 85.27m
 - LUDD014: 3.51% Cu over 2.43m from 40.27m
- Provisional life of mine of 10 years based on delivery of 500KT pa
- Galileo continues to accelerate its spending to earning requirements
- Metallurgical test work in progress

Targeted

Type	Tonnes (Mt)	Grade (% Cu)
Open Pit	6	1
UG	>10	1.5



SHINGANDA, ZAMBIA (Cu - Au)

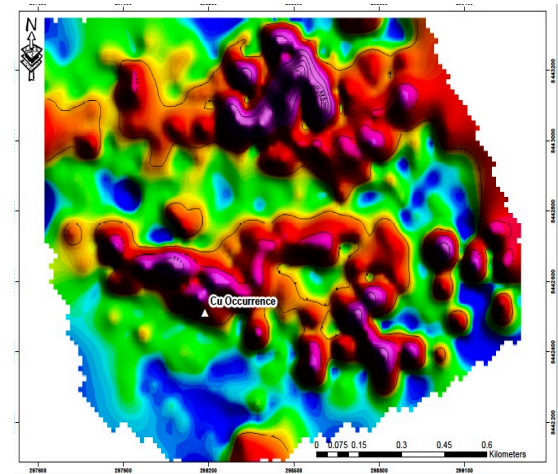


SHINGANDA, ZAMBIA (Cu - Au)



- Central Western Zambia
- Galileo has earned an initial 51% interest based on a cumulative spend of US\$500k to date. Increased interest achievable by entering into JV to develop a mining operation
- Potential IOCG-type deposit. 12km x 6km area anomalous in Cu and Au. Work to date indicates a potential IOCG-type deposit with either numerous shallow ore bodies or a potentially larger target
- Recent drill and trench results elevate status and prospectivity
- Licence covers part of a major 10km structural trend where two open pits have been developed (off the GLR Licence)
- Strong magnetic anomalies reflecting Cu-Au-bearing siliceous magnetite-hematite alteration are prevalent
- Recent drilling has intersected shallow intervals of Cu-rich semi-massive hematite mineralisation
- Re-interpretation of recent magnetics has generated further new targets
- Recently discovered new Au Target currently 120m x 25m open ended along strike – ideal target for ground geophysics follow-up
- Scout drill rig scheduled for site at the end of the Wet Season

Hole ID	Depth From (m)	Depth To (m)	Interval (m)	Grade Cu (%)
SHDD001	6.0	17	11.0	0.63
SHDD002	21	71.3	50.3	1.53
SHDD003	58	60	2.0	0.52
SHDD004	7.3	51	43.7	1.01



SHINGANDA, ZAMBIA (Cu - Au)

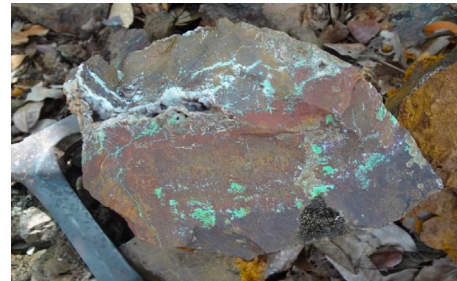
- Multiple targets identified within the license
- Pitting, trenching and soil sampling has exposed significant Cu in soil and Au anomalies all warranting further follow-up
- New Target: Pitting returns highly anomalous Au assays inc:

Pit.	Grade (g/t Au)
1.	3.53
7.	8.54
9.	33.90
11.	20.16
12.	0.32

- Historic and more recent magnetic geophysical data being re-interpreted with further drill targets anticipated
- Scout drill rig secured to undertake major programme of short fences to establish dimensions of a large number of targets and anomalies identified to date
- Aiming for follow-up diamond drill programme by the start of Q3



Typical old workings and prospecting excavations



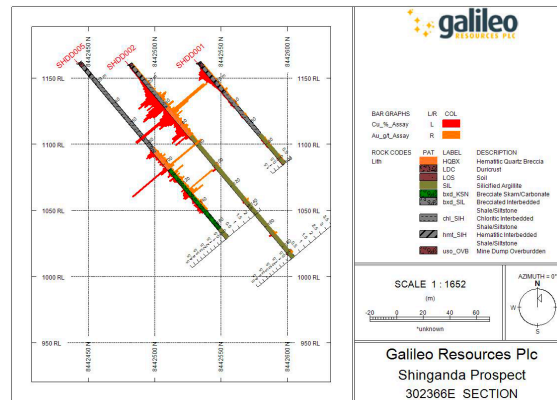
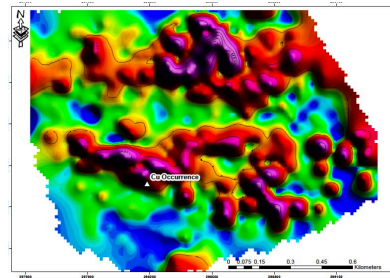
Siliceous hematite/malachite outcrop from pit -1.78% Cu, 3.14g/t Au

SHINGANDA, ZAMBIA (Cu - Au)

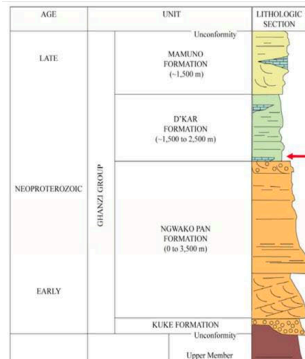
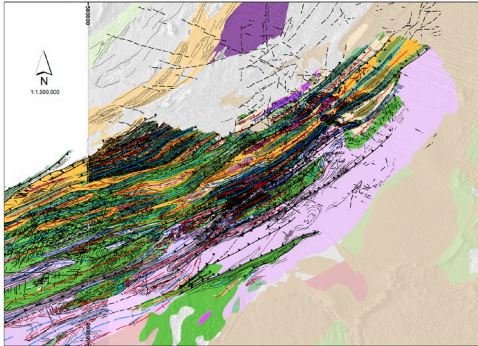
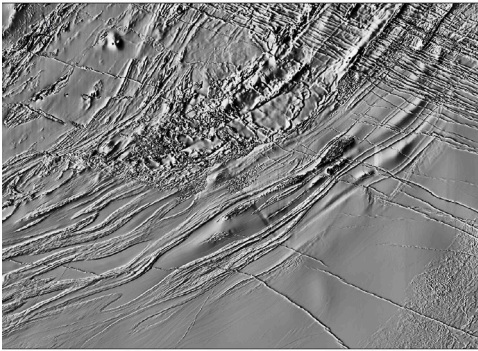


Programme

- Prospecting has delineated a 12km x 6km area anomalous in Cu and Au. Work to date indicates a potential IOCG-type deposit with either numerous shallow ore bodies or a potentially larger target
- Re-interpretation of recent magnetics has generated further new targets
- Excellent results from trench and pitting programme warrants the fast-tracking of further detailed ground geophysics to define broader targets and speed up delivery of drill-ready targets
- Recently discovered new Au Target currently 120m x 25m open ended along strike – ideal target for ground geophysics follow-up
- Scout drill rig scheduled for site at the end of the Wet Season



SANDFIRE, BOTSWANA COPPER BELT (Cu)

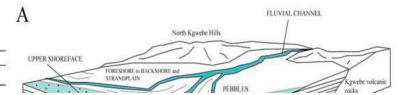
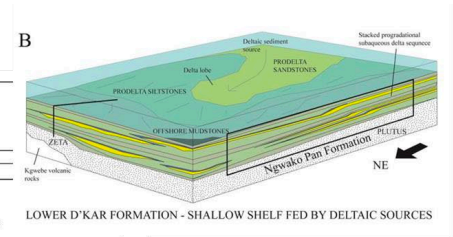


- ~550 Ma
- Orogeny, crustal shortening
- Regional folds, faults & shears
- Hydrothermal Cu & remobilization

- ~1100 to 800 Ma
- Ngwako Pan – D'Kar Contact
- D'Kar is host to Cu-Ag mineralization
- Basin development
- Deposition of carbonate clastics
- Stratobound Cu mineralization

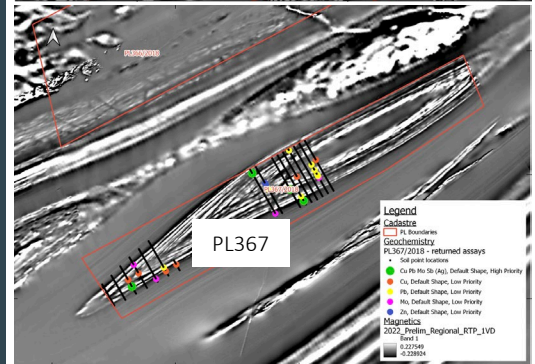
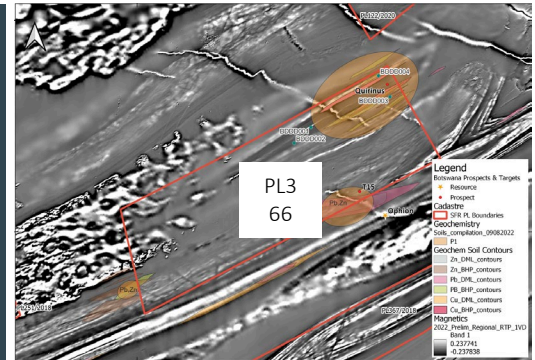
Parallel and graded laminations and planar cross-bedding.
Deposited within sub-basins.

Conglomerate and pebbly sandstone.



Current – Future work programme

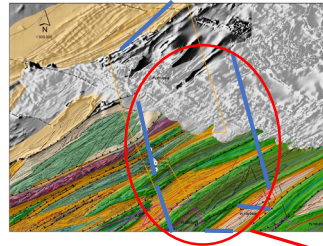
- PL366: Review of historic soils completed
 - Comparative soil survey planned
 - Airborne Gravity Gradiometry (“AGG”) scheduled
- PL367: 1,180 soil samples collected
 - 4 multi-element anomalies identified for follow-up
 - Infill soil survey scheduled
- PL122: No further work planned
- PL154: No further work planned
- PL250: 50m x 500m spaced soil survey planned over a 7.24km strike length of prospective contact
 - AGG survey scheduled
- PL251: 50m x 500m spaced soil survey planned
 - AGG survey scheduled
- PL44: Mapping to establish origin of magnetic signatures
 - 12 RC holes planned to depths of 250m
 - 2 DD holes planned to depth of 550m 15km apart
 - Downhole EM surveys on all holes drilled
- PL45: Hyperspectral imaging & petrographic studies
 - Engage IOCG specialist



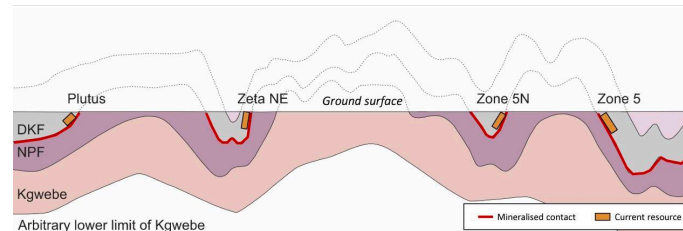
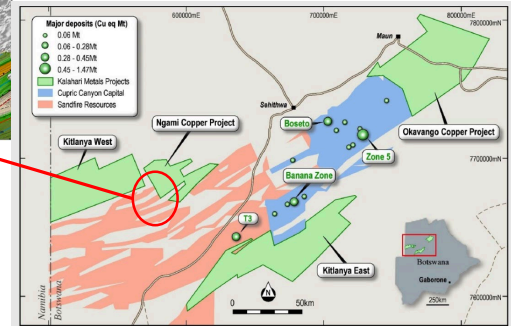
GALILEO BOTSWANA COPPER BELT (Cu)



- Kalahari Copper Belt
- 8 licences held in subsidiary Crocus Serv Resources covering 2,832km²
- 7 licences held in subsidiary Virgo Business Solutions covering 2,200km²
- 15 licences - 100% interest
- Licences have been reviewed in detail by geological consultant with extensive Botswanan Cu experience
- PL253: Located between Cobre/KML licences subject of a new discovery. *“This licence remains highly prospective, especially in light of the success of Cobre on their adjacent NCP Project”* Independent Report October 2022
- PL039: Independent consultant views the Licence as having very good exploration potential. *Independent Report October 2022*
- PL040: Considered “highly prospective” Wide-spaced drilling intersected target geology. Hole spacing sufficient to accommodate a Zone 5-size deposit. *Independent Report October 2022*



- PL253/2018 forms a wedge between two Cobre licences subject of a recent Cu discovery

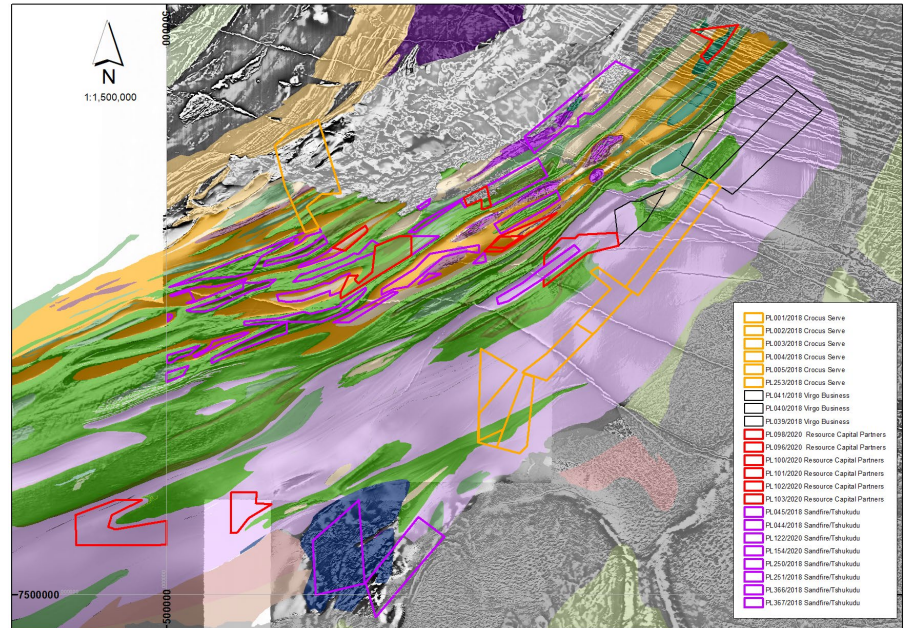


GALILEO BOTSWANA COPPER BELT (Cu)

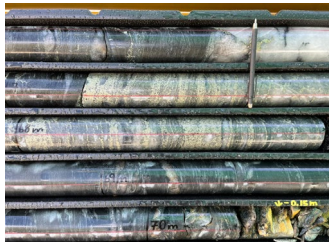


Current & Scheduled Programme

- Formal engagement of Kalahari Copperbelt consultant
- Relogging of all historic drill core and RC chips completed
- Magnetic susceptibility completed on all cores
- Ionic Leach soil surveys planned for specific licences
- Diamond drilling scheduled subject to soil geochemistry
- Commencement of discussions with near neighbours
- A suite exploration licences held by Galileo and African Pioneer (another company within the wider group). A significant portfolio allowing for a flexible strategic approach to cooperation with third parties and subsequent resource development



OTHER NEW AGE METAL PORTFOLIO



Copper
Lithium
Nickel & Zinc
Gold

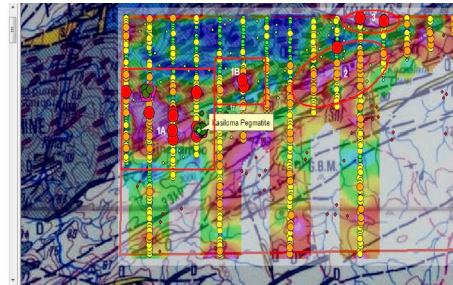


KAMATIVI, ZIMBABWE (Li - Cu)

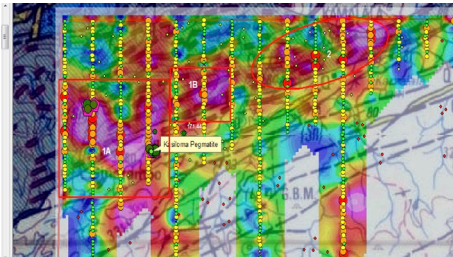
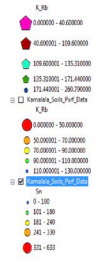


KAMATIVI, ZIMBABWE (Li - Cu)

- Western Zimbabwe - EPO 1782 covers 520km²
- Licensed to explore for Lithium – Tantalum – Niobium – Tin – Tungsten – Rare Earth Elements – Copper
- Adjacent to Kamativi mine
- Region well-known for significant Li deposits
 - Prospect Resources Ltd: Arcadia pit JORC (2012) MRE of 37.4Mt @ 1.22% Li₂O & 121ppm Ta₂O
 - China's Huayou cobalt acquired Arcadia Project for US\$422m
 - Huayou cobalt to invest US\$300m in Arcadia
- EPO 1782 hosts a number of Kamativi-type pegmatites
- Soil geochemical surveys completed over 1st Order priority targets - Results pending
- Licence also hosts prospective Gwayi River copper mine and surrounding Cu anomalies and small-scale workings in greenstone belt



Kamala & Paola Targets – Soil survey location



NE & E Extensions to Kamativi Mine Targets – Soil survey location



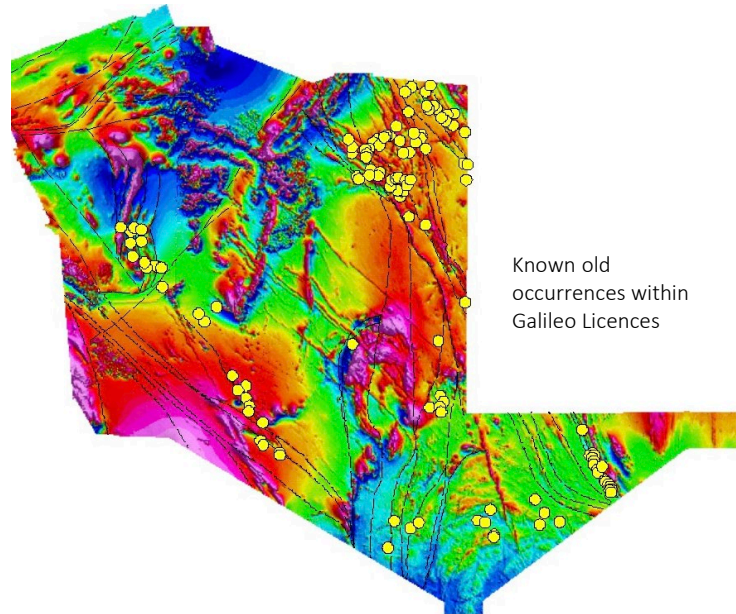
BULAWAYO GOLD & NICKEL, ZIMBABWE



BULAWAYO GOLD & NICKEL, ZIMBABWE



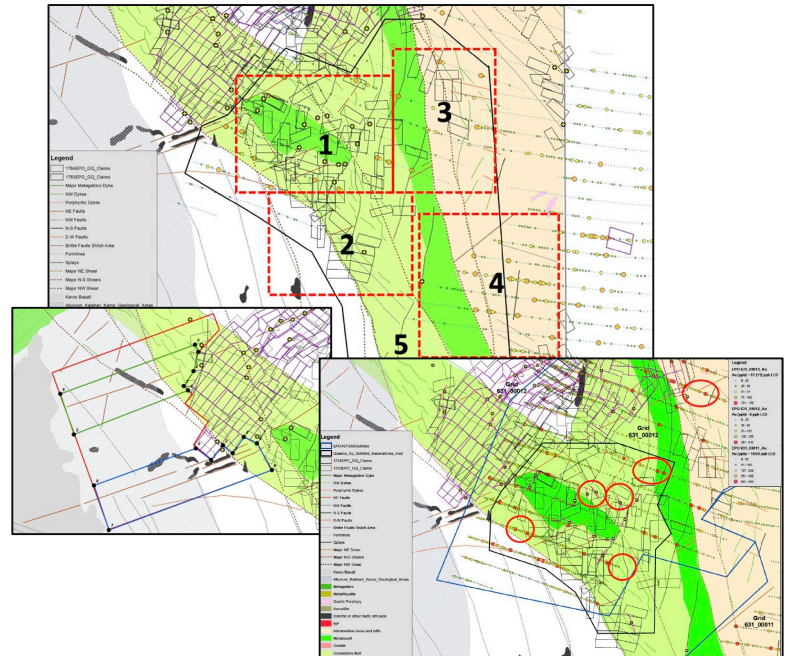
- 2 licenses covering 1,300km²
- Greenstone Belt rocks underlie the Licences
- No systematic exploration for more than 25 years
- Targeting 1 – 2Moz Au projects
- Historic data compilation complete
- High resolution airborne geophysical survey completed generating multiple targets for follow up
- Nickel targets generated during routine exploration
- Priority prospects have been subject to detailed exploration including soil surveys and ground geophysics
- Targets now drill-ready



Known old
occurrences within
Galileo Licences

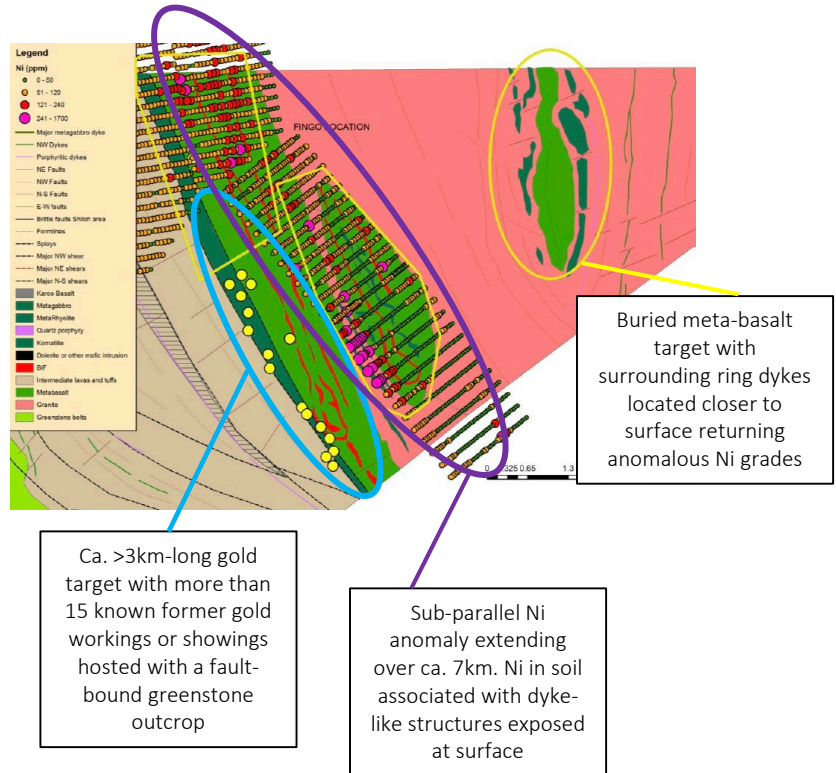
BULAWAYO GOLD, ZIMBABWE

- Multiple targets identified
- Extensions to historic or known high-grade narrow UG gold mines
- Shallow cover historically prevented artisanal discovery
- High resolution airborne geophysics highly successful
- Regional structures hosting gold mines and localised Au-bearing features all readily identified
- Soil geochemistry, detailed mapping and ground geophysics has led to target selection for drilling
- Drill-ready targets to be evaluated end of Q1 2023
- Opportunity for strategic alliances with other producers



BULAWAYO NICKEL, ZIMBABWE

- Nickel targets identified during routine airborne geophysical survey
- Multi-layered approach to exploration required with Au prospects sitting adjacent to Ni anomalies
- Exploration approach based on known geometry and ore genesis of other Ni deposits in Zimbabwe
- Some recently discovered Ni targets do not appear on the geological maps of Zimbabwe
- Review underway to select follow-up method for buried Ni targets.
- Closer-spaced soil geochemical surveys scheduled for linear gold target.
- Unconfirmed reports of high-grade Au coming from artisanal mining along the shear contact

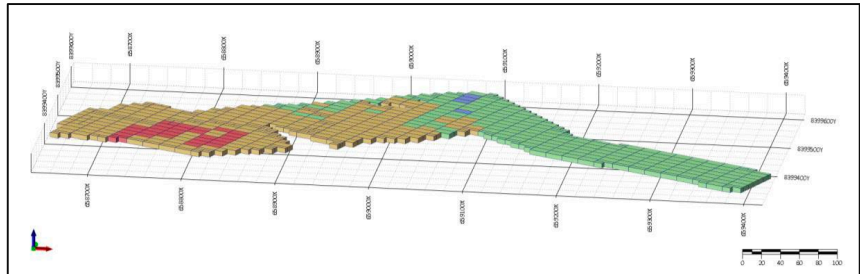
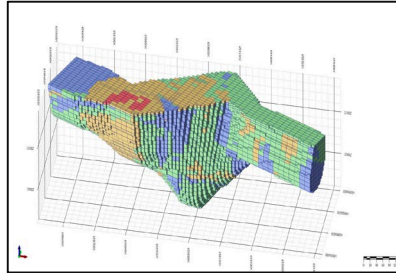


KASHITU, ZAMBIA (Zn)



KASHITU, ZAMBIA (Zn)

- GLR small-scale mining licence. Located 7km SE of the Kabwe processing plant
- Abundant high-grade pervasive Zn mineralisation from surface
 - Supergene enriched Zn-Pb-Ag zinc “ash” from 0 to 3m at >7% Zn
 - High-grade willemite veins is small well-defined bodies at 30 – 50% Zn
 - Extensive area of medium to low-grade mineralisation at 1 – 3% Zn
- Resource: BHP drilling and estimation determined a shallow 300m x 250m x 2 – 3m depth high-grade ore zone of >5% Zn
- Significant artisanal activity restricted by high water table
- Zambian contractor appointed to mine and manage the Project
- Collaboration agreement to be structured with local artisans and formal recognition by the Kashitu Municipality being concluded ahead of start-up at the end of the Wet Season



Block Model of “Free-Dig” Overburden Material

COMPELLING INVESTMENT CASE

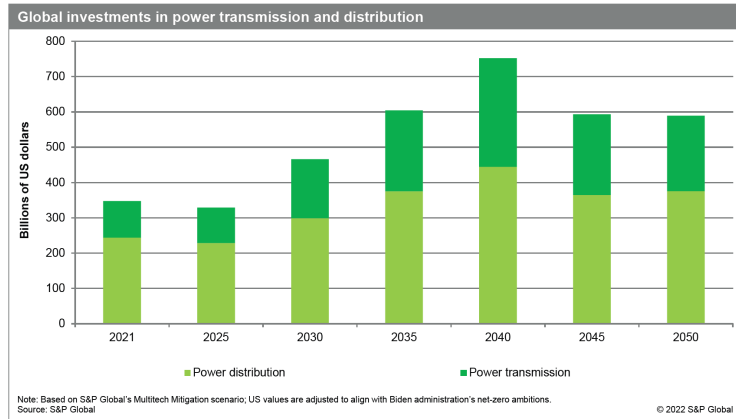
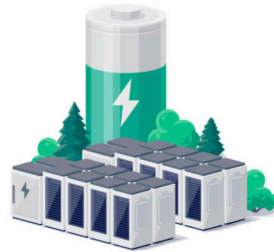


- Advance new age metal portfolio with emphasis on copper
- Investment return potential on Kamativi Lithium Project
- Good potential for a major nickel discovery near Bulawayo in Zimbabwe
- Company should be self funding on production commencing on Luansobe

High value portfolio which is currently undervalued due to adverse market conditions

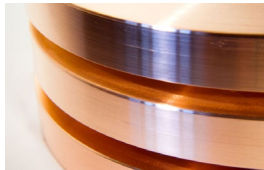
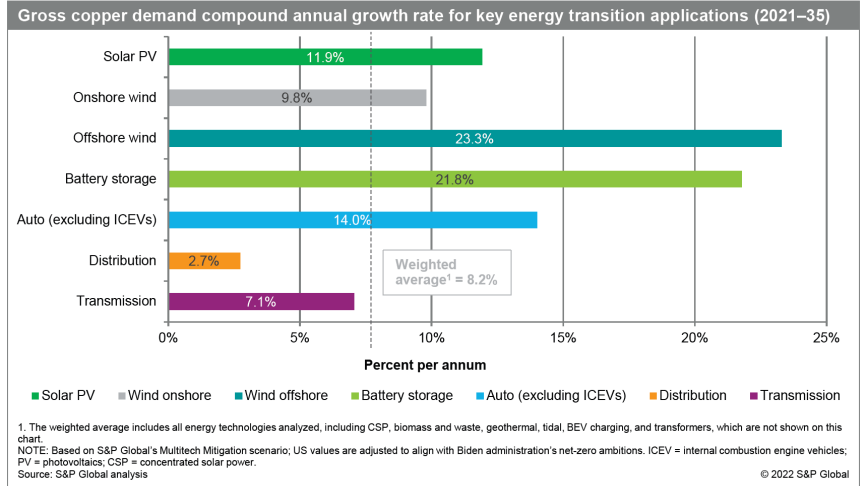
GLOBAL RECOGNITION OF THE IMPORTANCE OF Cu

- **World Bank:** “A low-carbon future will be very mineral intensive because clean energy technologies need more materials than fossil-fuel-based electricity generation technologies”
- **IMF:** “Striving to achieve net zero by 2050 is likely to spur unprecedented demand for some of the most crucial metals ...”
- **European Commission:** “Access to resources is a strategic security question for Europe’s ambition to deliver the Green Deal”
- **International Energy Agency:** “The shift to a clean energy system is set to drive a huge increase in the requirements for these minerals A rapid rise in demand for critical minerals ... in most cases well above anything seen previously”



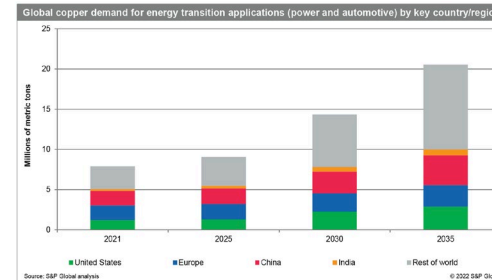
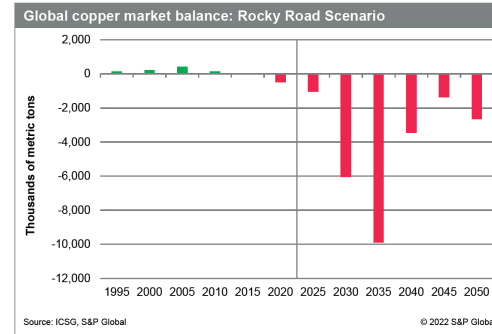
COPPER DEMAND

- Global refined copper demand is projected to double from 25MMt in 2021 to nearly 49MMt in 2035
- Energy transition technologies will account for approximately half of the growth in demand
- Cu production worldwide has never produced at the rate required to meet projected demand
- Cu remains a critical metal for other sectors not directly related to the Energy Transition BUT fundamental to economic growth which are also growing
- The USA will need to import an estimated 67% (two thirds) of its refined copper demand by 2035
- The gap between worldwide copper supply and demand is projected to begin in the middle of this decade



COPPER SUPPLY CONSTRAINTS

- Rapid deployment globally of Energy Transition technologies will cause a huge surge in copper demand
- Assuming aggressive capacity utilization rates and record recycling rates, refined copper demand will outstrip supply up to 2035
- The shortfall in Cu demand is projected to reach a high of 9.9MMt in 2035
- This equates to a 20% shortfall from the supply level required for the targeted Net-Zero Emissions by 2050



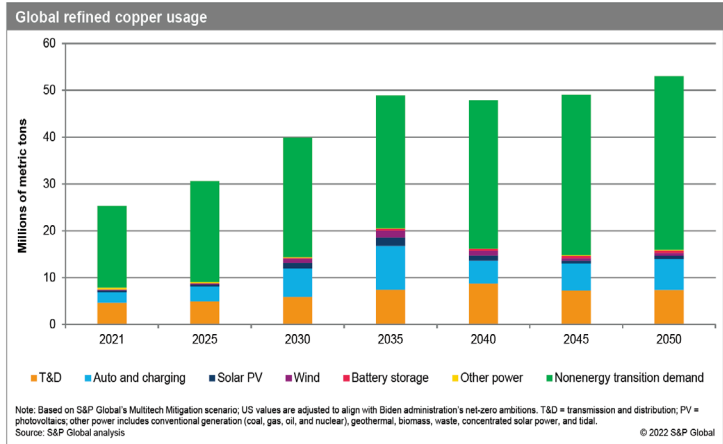
REFINED COPPER USAGE

- Growth in Cu demand will vary significantly by technology
- During the period 2021 to 2035 Cu demand is projected to increase by 82%

Sector demand during the same period:

	2021	2035
Power and auto Sectors:	2.2MMtpa	9.3MMtpa
Transmission/Distribution:	4.7MMtpa	7.5MMtpa
Power Generation:	0.6MMtpa	3.7MMtpa

- Copper demand globally will be dominated by 4 players, China, Europe, USA and to a lesser degree India
- Africa’s population is expected to double to 2.5 billion by 2050. the African Development Bank’s “Light up and power Africa” initiative will see huge demand driven by on-grid generation capacity, on-grid connections, and off-grid generation; and for increased access to clean energy for cooking.



DEMOCRACY INDEX 2021

- Information derived from Economist Intelligence Unit (“EIU”) annual report on democracy
- The Democracy Index provides a snapshot of the state of democracy worldwide in 165 independent states and two territories
- This covers almost the entire population of the world
- The Democracy Index is based on five categories: electoral process and pluralism, functioning of government, political participation, political culture, and civil liberties
- *Countries in which GLR, XTR, BZT, AFP and KEN operate are well-represented into the upper quartiles of the Index*
- *Zambia in the top 10 most improved*
- *Latin America reports the biggest downgrade in the Democracy Index*

